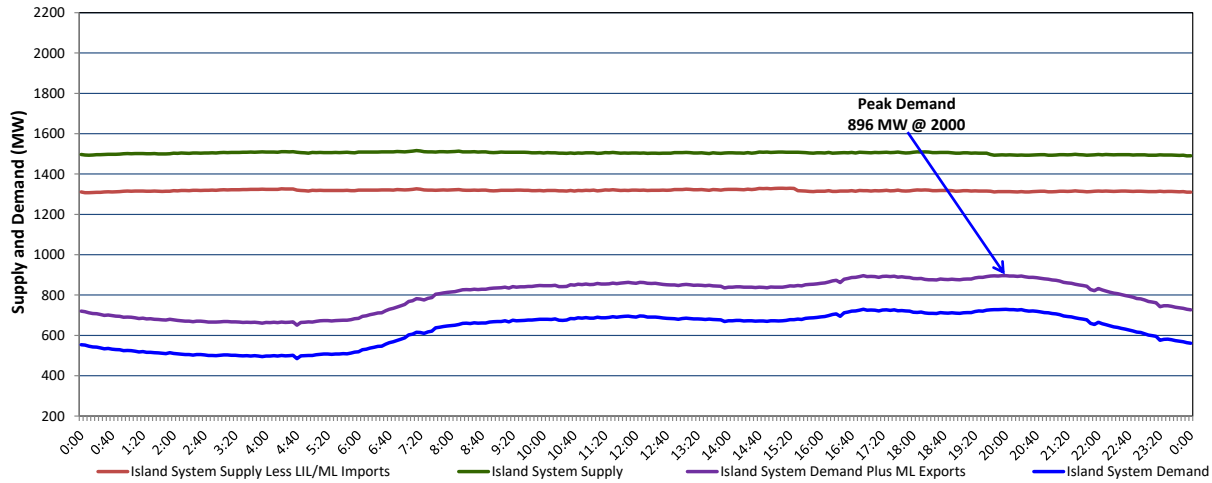


Newfoundland Labrador Hydro (NLH)
Supply and Demand Status Report Filed Wednesday, September 13, 2023

Section 1
Island Interconnected System Supply, Demand & Exports
Actual 24 Hour System Performance For Tuesday, September 12, 2023



Supply Notes For September 12, 2023

- A As of 0701 hours, March 06, 2023, Upper Salmon Unit unavailable (84 MW).
- B As of 0800 hours, May 21, 2023, Holyrood Unit 2 unavailable due to planned outage (170 MW).
- C As of 0903 hours, June 29, 2023, St. Anthony Diesel Plant available at 8.85 MW (9.7 MW).
- D As of 0800 hours, July 09, 2023, Holyrood Unit 1 unavailable due to planned outage (170 MW).
- E As of 2059 hours, July 13, 2023, Stephenville Gas Turbine unavailable (50 MW).
- F As of 2238 hours, July 25, 2023, Bay d'Espoir Unit 6 unavailable (76.5 MW).
- G As of 0933 hours, August 15, 2023, Holyrood Unit 3 unavailable due to planned outage (150 MW).

Section 2
Island Interconnected Supply and Demand

Wed, Sep 13, 2023	Island System Outlook ³	Seven-Day Forecast	Temperature (°C)		Island System Daily Peak Demand (MW)	
			Morning	Evening	Forecast	Adjusted ⁷
Available Island System Supply: ⁵	1,459 MW	Wednesday, September 13, 2023	15	14	1,015	1,015
NLH Island Generation: ^{4,8}	990 MW	Thursday, September 14, 2023	16	16	700	700
NLH Island Power Purchases: ⁶	90 MW	Friday, September 15, 2023	19	19	750	750
Other Island Generation:	200 MW	Saturday, September 16, 2023	18	15	715	715
ML/LIL Imports:	179 MW	Sunday, September 17, 2023	16	16	745	745
Current St. John's Temperature & Windchill:	13 °C	Monday, September 18, 2023	17	15	755	755
7-Day Island Peak Demand Forecast:	1,015 MW	Tuesday, September 19, 2023	9	7	810	810

Supply Notes For September 13, 2023

- Notes:
1. Generation outages for running and corrective maintenance are included. These are not unusual for power system operations. They generally do not impact customer supply. The power system operators schedule outages to system equipment whenever possible to coincide with periods when customer demands are low and sufficient supply reserves are available. However, from time to time equipment outages are necessary and reserves may be impacted.
 2. Due to the Island system having no synchronous connections to the larger North American grid, when there is a sudden loss of large generating units there may be a requirement for some customer's load to be interrupted for short periods to bring generation output equal to customer demand. This automatic action of power system protection, referred to as under frequency load shedding (UFLS), is necessary to ensure the integrity and reliability of system equipment. Under frequency events have typically occurred 5 to 8 times per year on the Island Interconnected System and the resultant customer load interruptions are generally less than 30 minutes. With the activation of the Maritime Link frequency controller during the winter of 2018, UFLS events have occurred less frequently.
 3. As of 0800 Hours.
 4. Gross output including station service at Holyrood (24.5 MW) and improved NLH hydraulic output due to water levels (35 MW).
 5. Gross output from all Island sources (including Note 4).
 6. NLH Island Power Purchases include: CBPP Co-Gen, Nalcor Exploits, Rattle Brook, Star Lake, Wind Generation and capacity assistance (when applicable).
 7. Adjusted for curtailable load, market activities and the impact of voltage reduction when applicable.
 8. Due to limitations inherent in the design of combustion turbines, the output of combustion turbines may be reduced in the event that ambient temperatures exceed the threshold

Section 3
Island Peak Demand Information
Previous Day Actual Peak and Current Day Forecast Peak

Tue, Sep 12, 2023	Actual Island Peak Demand ⁹	20:00	896 MW
Wed, Sep 13, 2023	Forecast Island Peak Demand		1,015 MW

Notes: 9. Island Demand / LIL / ML Exports (where applicable) is supplied by NLH generation and purchases, plus generation owned and operated by Newfoundland Power and Corner Brook Pulp & Paper (Deer Lake Power, DLP).